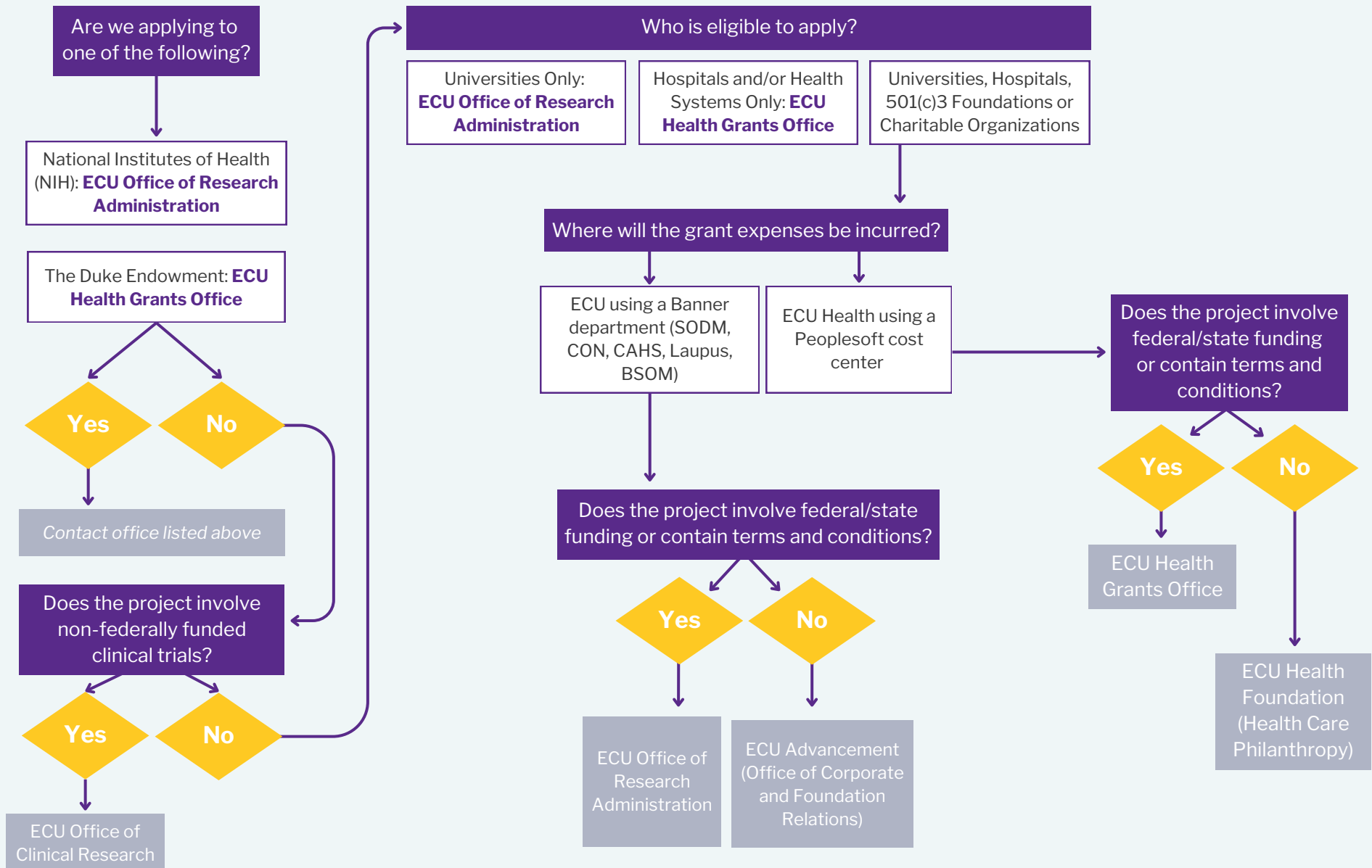


Health Care and Health Sciences Grant Decision Tree



ECU Advancement (Corporations and Foundations Division)

Terah Archie
Senior Director of Corporate and Foundation Relations
archiet15@ecu.edu
(252) 737-1820

ECU Health Foundation (Health Care Philanthropy)

Rhonda James
Executive Director, Health Care Philanthropy
rhonda.james@ecuhealthfoundation.org
(252) 847-1071

ECU Health Grants Office

Michele Cherry
Director, Grants Office
michele.cherry@ecuhealth.org
(252) 847-5471

ECU Office of Clinical Research

Dr. Russ Price
Interim Director, Office of Clinical Research, BSOM
Offices of Research and Graduate Studies
pricest17@ecu.edu
(252) 744-0400

ECU Office of Research Administration

Deborah Lundin
Director, Pre-Award Services, ECU Office of
Research Administration
lundind22@ecu.edu
(252) 328-9477

This is a guide for faculty and staff on the ECU Health Sciences campus and the ECU Health System on where to begin conversations when you have identified a funder you want to approach. After an initial conversation with the appropriate contact, collaboration with one or more of the other ECU or ECU Health Offices is likely.